



**STRUCTURAL TECH
CORPORATION** LTD

1040 DEGURSE DRIVE,
SARNIA, ONTARIO N7T 7J2

TEL: (519) 332-3190

FAX: (519) 332-8298

EMAIL: head_off@structech.com

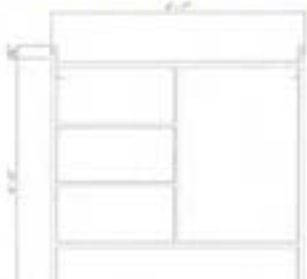
WEB: www.structech.com

Smart Scaffolding

2006 INNOVATION WINNER



**SMART SCAFFOLDING
4' x 4' STANDARD FRAME**



GALVANIZED 18.2 LBS **S-SF4**

**SMART SCAFFOLDING
2' x 4' STANDARD FRAME**



GALVANIZED 10.2 LBS **S-SF2**

**SMART SCAFFOLDING
5' LADDER FRAME**



GALVANIZED 15 LBS 12 OZ **S-LF5**

**SMART SCAFFOLDING
3' LADDER FRAME**



GALVANIZED 10 LBS **S-LF3**



**SMART SCAFFOLDING
GUARD RAIL POST & RAILS**

- S-GRP
5.3 LBS
- S-GR5
4.5 LBS
- S-GR4
3.5 LBS
- GALVANIZED



S-GRP/GR5/GR4

**SMART SCAFFOLDING
5' PLYDEK**



GALVANIZED FRAME w/ PCYWOOD DECK
34 LBS **S-5DEK**

**SMART SCAFFOLDING
5' HORIZONTAL BRACE**



GALVANIZED 6 LBS

S-H5H

**SMART SCAFFOLDING
GUARD RAIL POST & RAILS**

- S-GRP
5.3 LBS
- S-GR5
4.5 LBS
- S-GR4
3.5 LBS
- S-GR28
GALVANIZED



S-GRP/GR5/GR4/GR28



**SMART SCAFFOLDING
STAIRWAY HANDRAIL**



GALVANIZED 10 LBS

S-SHR

**SMART SCAFFOLDING
LOCK PIN**



GALVANIZED 2 OZ

S-LP

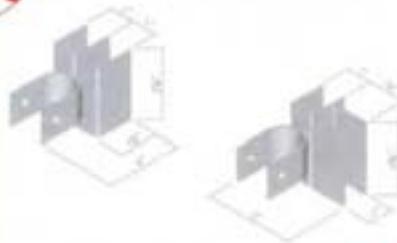
**SMART SCAFFOLDING
VC PIN**



GALVANIZED 1 LB

S-VCP

**SMART SCAFFOLDING
KICK PLATE BRACKETS**



GALVANIZED 1 LB EACH

S-KPB



**STRUCTURAL TECH
CORPORATION^{LTD.}**

**SMART SCAFFOLDING
OUTRIGGER**



S-OR

**SMART SCAFFOLDING
18" SCREWJACK w/ BASE**



S-18JB

**SMART SCAFFOLDING
BASE PLATE**



S-BP



**SMART SCAFFOLDING
6" CASTER**



S-C6NM

**SMART SCAFFOLDING
3' X 5' CROSS BRACE**



S-XB35

**SMART SCAFFOLDING
4' STAIRWAY**



S-SW4



**STRUCTURAL TECH
CORPORATION LTD.**



Smart Scaffold By Structural Tech

This product was designed for small contractors and homeowners.

- Lightweight
- Light duty use
- Built to CSA standards
- Tested as per weight per section
- 500 lbs at safety factor 3.1
- Made from 16 ga galvanized coated structural steel
- Welded with certified welders by CWB (Canadian Welding Bureau)

CAUTION:

This product is to be used in accordance to all the codes and safe practices put out by the Department of Labour and the manufacturer. Use all safety devices made for this scaffold and tie off to prevent horizontal moving.

Échafaudage futé Par Structural Tech

Ce produit a été conçu pour des petits entrepreneurs et pour les particuliers.

- Léger
- Pour utilisation léger
- Construit aux normes CSA
- Examiné selon le poids par section
- 500 livres au facteur de sûreté 3.1
- Fait avec de l'acier galvanisé de gauge 16 enduit
- Soudé par des soudeurs certifiés par le CWB

ATTENTION:

Ce produit doit-être employé selon les codes ET pratique sûres émis par le département du travail ET par le fabricant.